

Network Connection and Job Import

UV INKJET PRINTER

JFX550-2513

JFX600-2513

**Network Connection
and Job Import Guide**

You can also download the latest manual from official website.

MIMAKI ENGINEERING CO., LTD.

<https://mimaki.com/>

D203649-12

Original instructions

TABLE OF CONTENTS

Introduction

1. Connecting to a Local Network.....	4
LAN connection checking method	4
2. Setting up an Ethernet connection.....	6
Sharing a Network	6
Setting up an Ethernet connection.....	7
3. With output port set to [Ethernet].....	10
Creating RIP Data.....	10
Copying jobs to a shared folder at any time	13
4. Selecting a RIP Network Card	14

Introduction

The JFX600-2513 (hereafter referred to as "the machine") is capable of importing jobs into its "shared folder" via the network.

This manual provides the necessary network settings for connecting the RIP PC to the machine and explains how to manage jobs when printing using a shared folder.

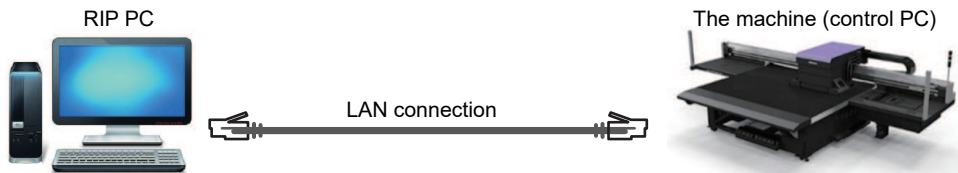
1. Connecting to a Local Network

Connect the machine (control PC) and RIP PC via a local network or direct LAN cable to enable jobs (RIP data) to be easily imported. Insert the LAN cable until it clicks into place.

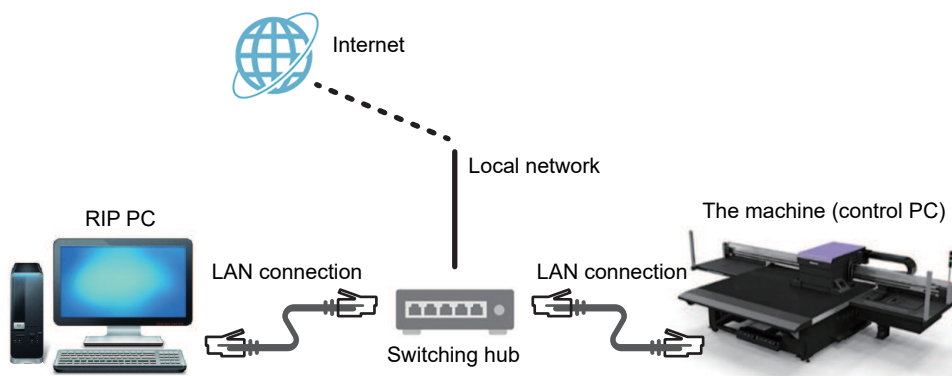
● Machine (control PC) and RIP PC configuration

The machine can be connected using one of the following two methods:

- Connection using a LAN cable



- Connection via a local network



● LAN connection precautions

- Set up the control PC and the RIP PC to transfer print data on the same network. Connections via a router or using Wi-Fi are not possible.
- The following connection devices should be used for a local network connection.

Device	Required	Recommended
RIP PC LAN port	1 Gbps or higher	10 Gbps
LAN cable	CAT6A or higher	CAT6A or higher
Switching hub	1 Gbps or higher	10 Gbps

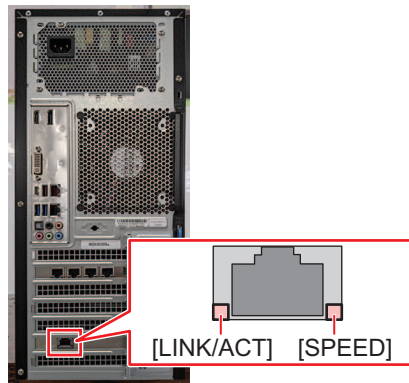
LAN connection checking method

● Check the machine (control PC) status

Check the LAN connector indicators near the bottom on the back of the control PC.

- The LAN connector indicators are illuminated when the system is connected.

- If the indicators are not illuminated, insert the LAN cable until it clicks into place.



LED	Status	Overview
SPEED	Green	Linked via 10GBASE-T
	Yellow	Linked over a connection other than 10GBASE-T
LINK/ACT	Flashing green	Data is being sent and received.
	Green	No network traffic.



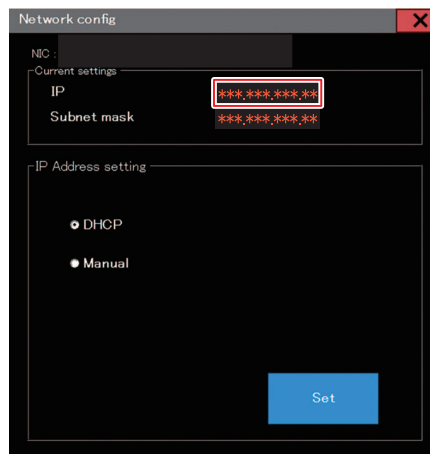
- Do not unplug the cable while data is being transferred.

● Check the touch panel

Check [Network setting] on the touch panel.



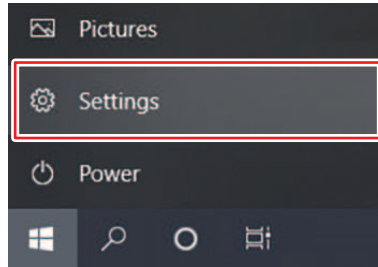
- Be sure to confirm whether the LAN connector indicator is illuminated before configuring the following settings.
- From MENU on the touch panel, tap [SETTING 2] > [System setting] > [Network setting]. Check the dialog box. If the LAN connection has been successfully established, the address will be displayed.



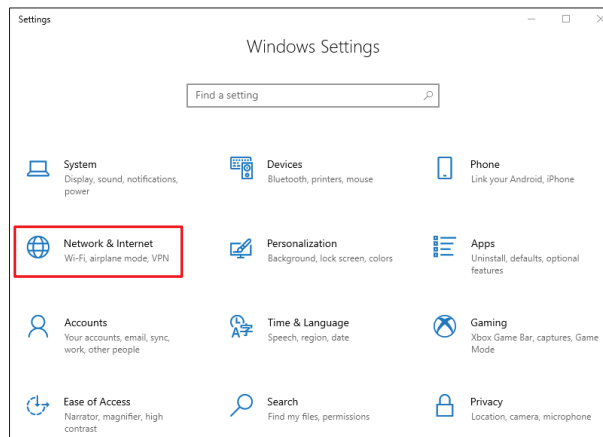
2. Setting up an Ethernet connection

Sharing a Network

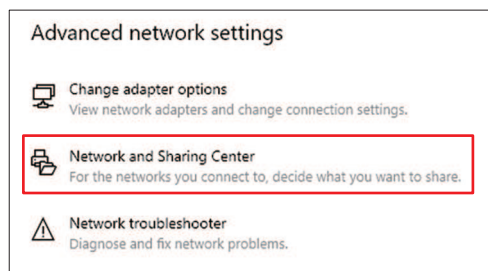
1 On the RIP PC, open the Windows start menu and click [Settings].



2 Select [Network & Internet].

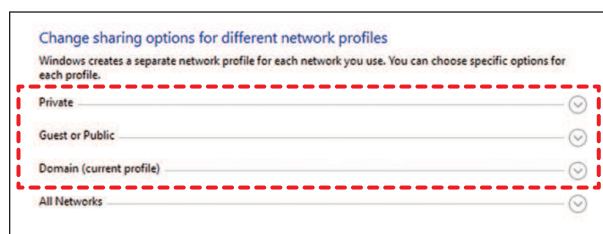


3 Under the "Change your network settings" section, select [Sharing options].

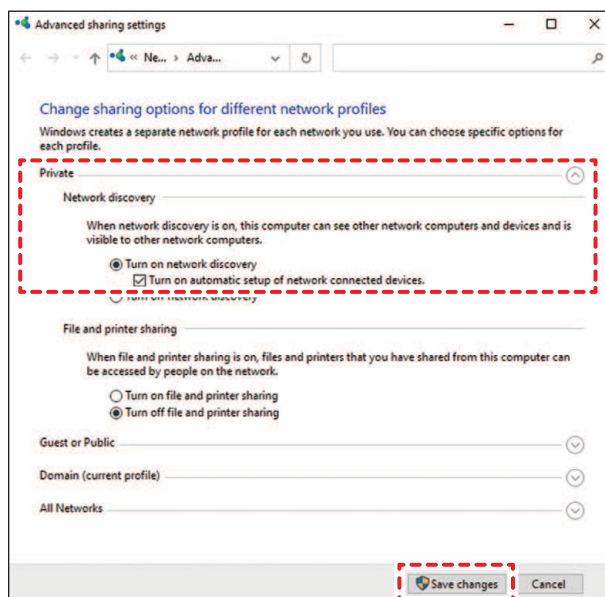


4 Select [Private], [Guest or Public], or [Domain].

- The selection items may vary depending on the network configuration. Contact your network administrator.



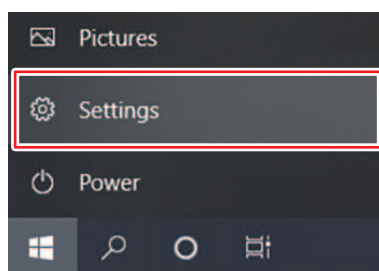
5 Select [Turn on network discovery] and click [Save changes].



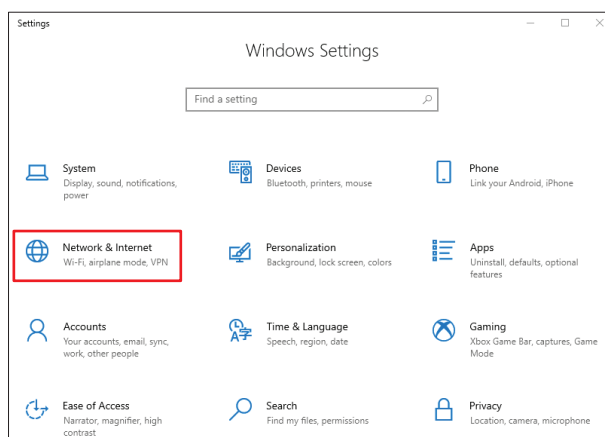
6 Restart the RIP PC.

Setting up an Ethernet connection

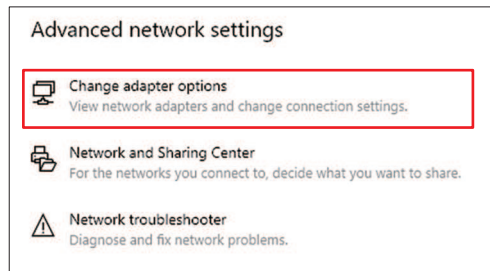
1 On the RIP PC, open the Windows start menu and click [Settings].



2 Select [Network & Internet].

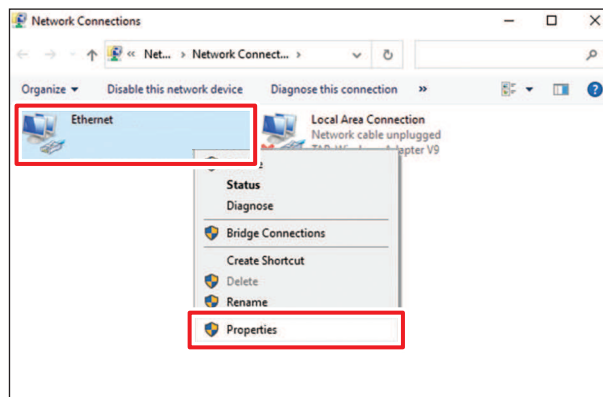


3 Select [Change adapter options].

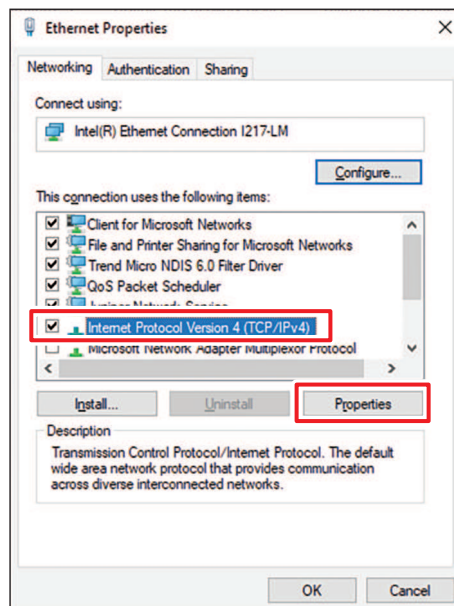


4 Right-click [Ethernet], and then select [Properties].

- If there are multiple [Ethernet] icons, select the properties for the port you wish to use.
- The names may vary depending on the PC.

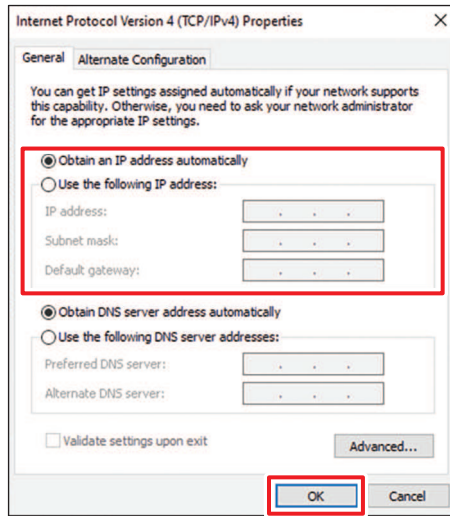


5 On the Networking tab, select the [Internet Protocol Version 4 (TCP/IPv4)] item, then click [Properties].



6 Configure the network settings.

- Configure the network according to the network settings of the control PC.
- For more information regarding the network settings of the control PC and RIP PC, contact your network administrator.



7 Restart the RIP PC.

8 Confirm that the connection has been established.

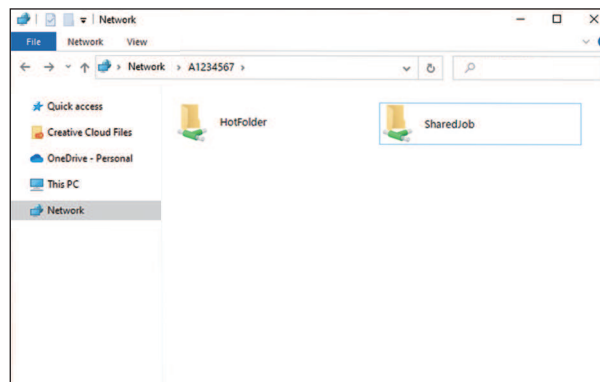
- Connect the RIP PC and control PC via a LAN cable. ["Connecting to a Local Network"\(P. 4\)](#)

9 Open Explorer on the RIP PC and enter [\machine serial number] in the address bar.

- The machine serial number can be checked on the touch panel (MENU > [SYSTEM] > [System information]).

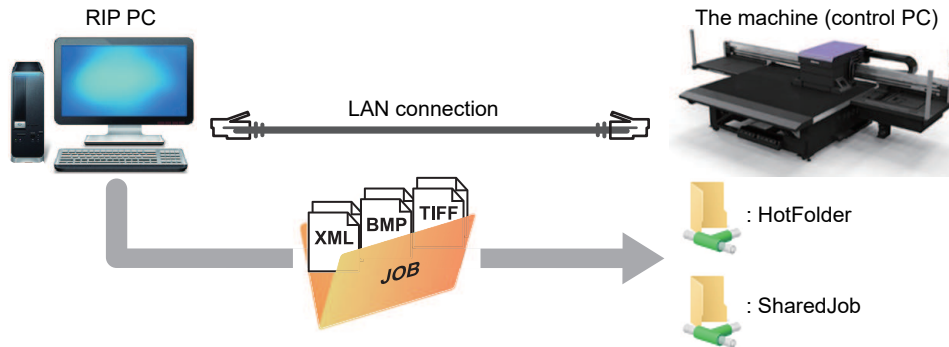
10 Check the Explorer display.

- Check whether two folders, [HotFolder] and [SharedJob], are displayed. If they are displayed, configuration is complete.



3. With output port set to [Ethernet]

Import jobs (RIP data) to the machine (control PC) using a local network. ☞ "Connecting to a Local Network"(P. 4)



The shared folder for the machine (control PC) includes the following two types: These should be used as necessary, as the operation differs depending on the data saving destination.

Item	Overview
SharedJob	<ul style="list-style-type: none"> Saving data in [SharedJob] adds the jobs to the MPC job list. ☞ "When saved to [SharedJob]"(P. 12) <ul style="list-style-type: none"> Jobs can be printed by selecting from the job list.
HotFolder	<ul style="list-style-type: none"> Saving data in [HotFolder] starts printing immediately. ☞ "When saved to [HotFolder]"(P. 12) <ul style="list-style-type: none"> Printing is not always started immediately, even if you save to [HotFolder].

Creating RIP Data

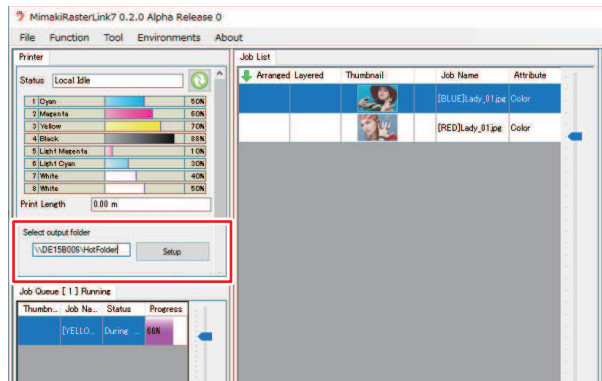
1 Launch RasterLink.

- Click the icon on the RIP PC desktop.



2 Select the shared folder from [Select output folder].

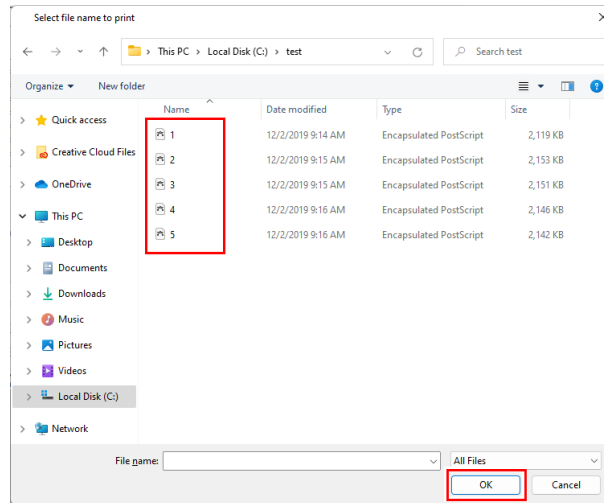
- SharedJob: To print from [JOB LIST] on the touch panel (Example: [*****\SharedJob])
- HotFolder: To print automatically (Example: [*****\HotFolder])



- Please change "*****" to the serial number of the printer.
- From MENU on the touch panel, tap [SYSTEM] > [System information] to display the serial number on the browser screen at right.

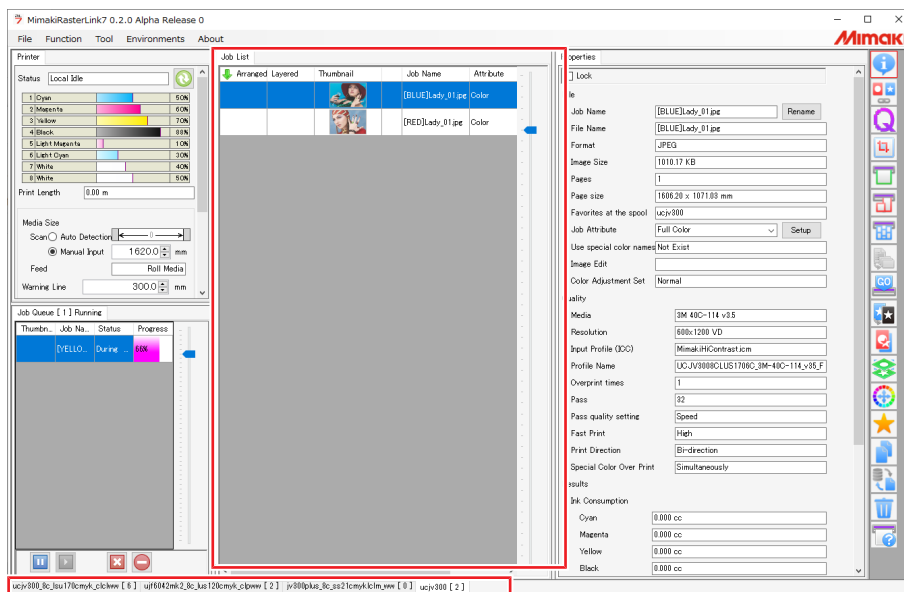
3 Select the image data to print.

- (1) Select [File] > [Open].
- (2) Select the desired image data, then click [OK].
 - If multiple printers are registered, select JFX550-2513, JFX600-2513 in "Printer name".



4 Select the image data imported.


- The image is displayed in the tab for JFX550-2513, JFX600-2513 selected in "Printer name".



5 Check the settings and alter as necessary.

- Specify the following settings by clicking the function icons shown on the right-hand side of the screen:




 (General Print): Specifies settings like enlargement/reduction and number of copies.

 (Print Condition): Selects a color profile for the media and ink set loaded in the machine.



- For more information, refer to the RasterLink reference guide. <https://mimaki.com/download/software.html>

6 Prepare a job (RIP data) from image data.

- Click  (Execute) from the function icons on the right-hand side of the screen. Select "RIP and Print", then click [Start].
- When the output destination folder is [SharedJob]: The RIP job is added to the MPC job list.  "When saved to [SharedJob]"(P. 12)
- When the output destination folder is [HotFolder]: "Job receiving" is displayed in the lower-left corner of the MPC screen, and printing starts.  "When saved to [HotFolder]"(P. 12)



- When the output port is set to [Ethernet], the job is saved in the specified shared folder with the job name determined automatically by RasterLink.

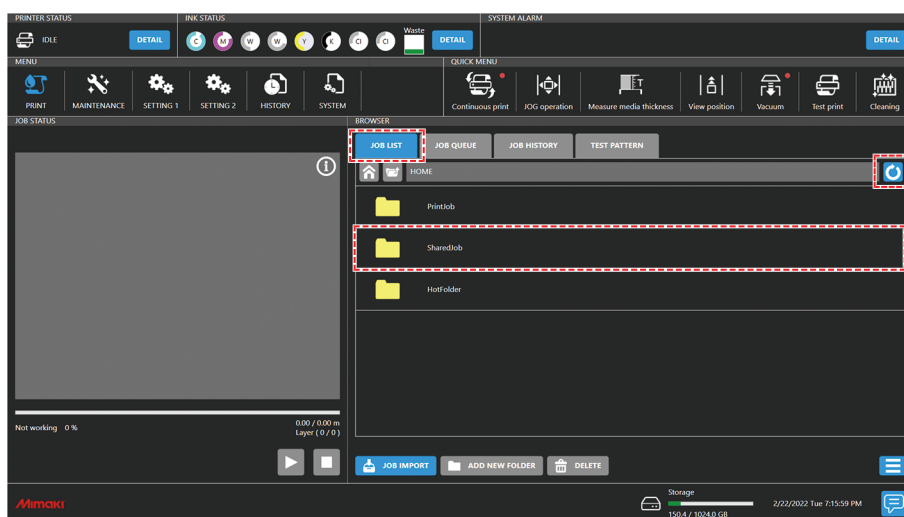
When saved to [SharedJob]

Saving data in [SharedJob] adds the jobs to the MPC job list.

● Job checking procedure

Jobs that have been successfully loaded are saved in [SharedJob].

- From MENU on the touch panel, tap [PRINT] > [JOB LIST] > [SharedJob].



- If a job is not displayed, tap the refresh button.

When saved to [HotFolder]

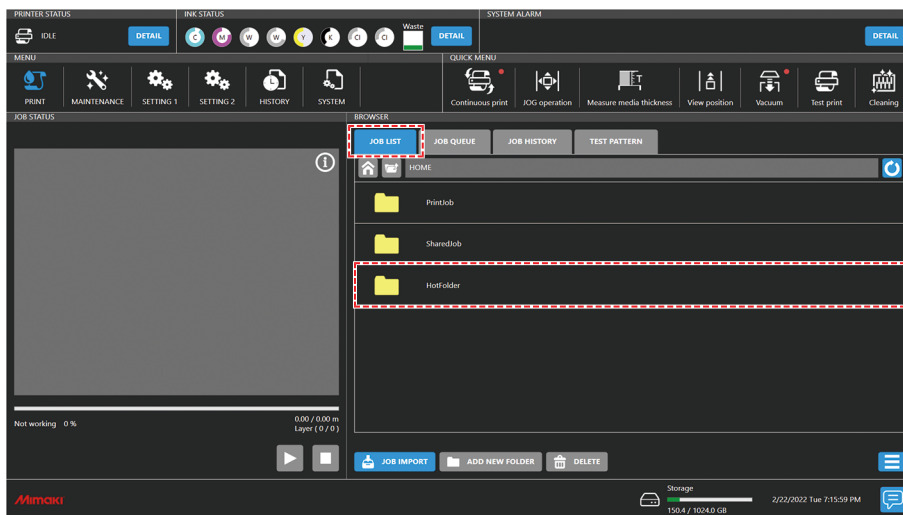
Saving data in [HotFolder] starts printing immediately.

- [QUICK MENU] > [Continuous print] setting
 - When continuous print mode is on: Printing starts immediately.
 - When continuous print mode is off: The job is added to the queue. Please turn on continuous print mode to start printing.
- If another job is currently being printed
 - The job is added to the queue. Printing starts automatically when the other job print is complete. Please note that when automatic operation mode or work change mode are turned on, continuous print mode will turn off and printing will not start once the other job print is complete.

● Job checking procedure

Jobs that have been successfully loaded are saved to [HotFolder].

- From MENU on the touch panel, tap [PRINT] > [JOB LIST] > [HotFolder].

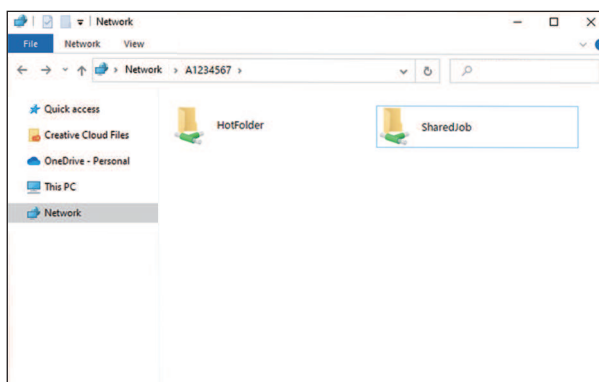


- Up to 100 jobs can be saved to [HotFolder] by default. If the number exceeds 100 jobs, the oldest jobs in the print history are deleted. The number of jobs that can be saved can be changed as follows:
Setting 2 Menu[System setting] > [HotFolder setting]

Copying jobs to a shared folder at any time

Jobs can be created in advance on the RIP PC, and then copied to the shared folder at any time for importing to MPC.

- 1 Create a job on the RIP PC in advance.**
- 2 Copy the job created on the RIP PC to the shared folder (SharedJob or HotFolder) to be used.**
 - Enter [*****] in the Explorer address bar to open the shared folder of the machine.



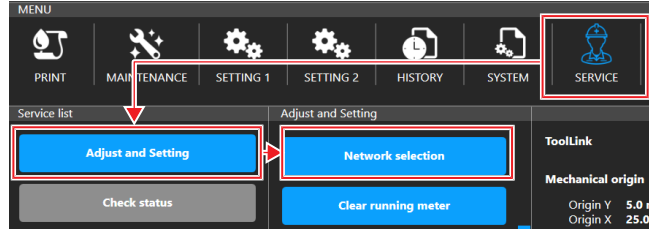
- Please change "*****" to the serial number of the printer.
- From MENU on the touch panel, tap [SYSTEM] > [System information] to display the serial number on the browser screen at right.

4. Selecting a RIP Network Card

From the [SERVICE] menu, ensure that the RIP network card is selected.

1 From the MPC menu, tap [SERVICE] > [Adjust and Setting] > [Network selection].

- A dialog box appears.



2 Verify that the RIP network card is selected.

- Ensure that the network card with a status of "Up" in the [Link Status] column is also marked as "Select" in the [Selection] column.

The screenshot shows the 'Network selection' dialog box. It has a title bar with 'Network selection' and a close button (X). There is an 'Update' button in the top right corner. Below the title bar is a table with the following columns: Description, Link Status, Speed, Info, and Selection. The table contains two rows of data:

Description	Link Status	Speed	Info	Selection
Realtek PCIe GbE 10Gbit Network Adapter	Up	1GB	IP:10.10.10.104	Select
Intel(R) Ethernet Connection (7) I219-LM	Down		IP:100.200.001.027	



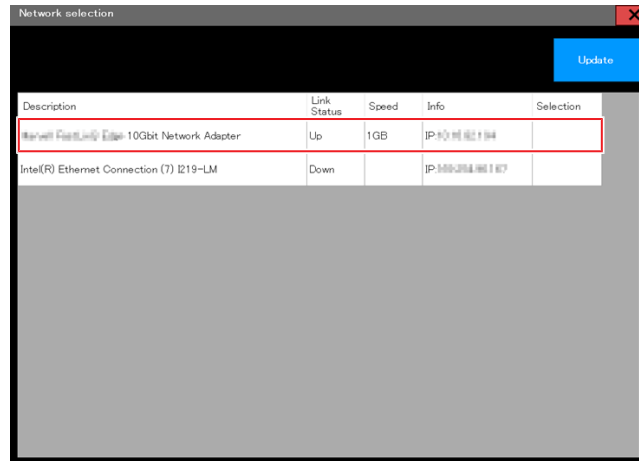
- Perform this procedure with a LAN cable connected to the RIP network card.

- If the corresponding network card is not marked as "Select", follow the steps below to select it.

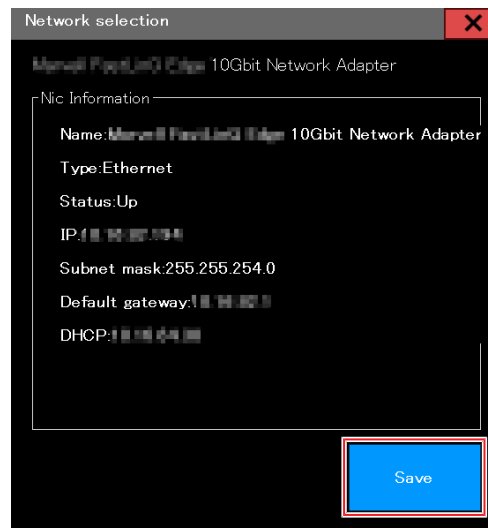
- **Selecting a network card**

- (1) Click the corresponding network card.

- A dialog box appears.



- (2) Review the displayed information and click the [Save] button.



- (3) Confirm that the corresponding network card is now marked as "Select".

- (4) Restart the machine and control PC.

- For details of how to restart, refer to Operation Manual > Chapter 3 Settings (MPC) > "Power Supply".

- (5) Ensure that a connection can be established from the RIP to both the machine and the control PC.

NetworkConnection & Job Import Guide

November, 2023

MIMAKI ENGINEERING CO.,LTD.

2182-3 Shigeno-otsu, Tomi-shi, Nagano 389-0512 JAPAN

D203649-12-06112023

